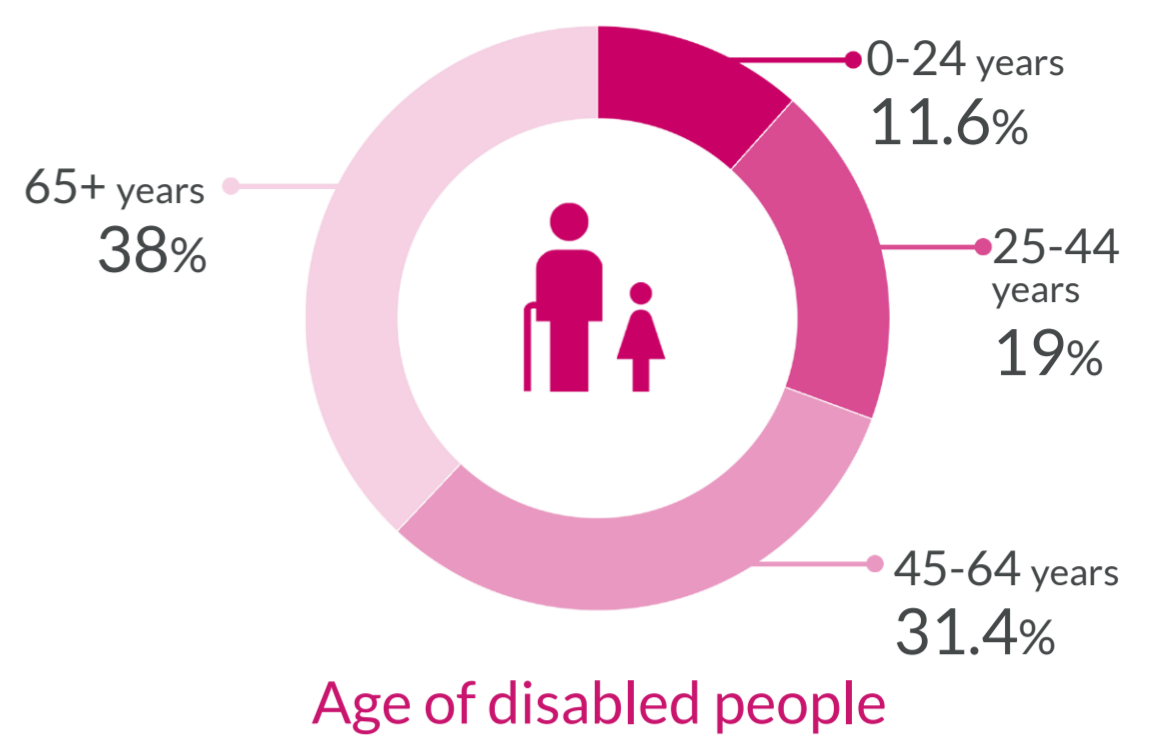
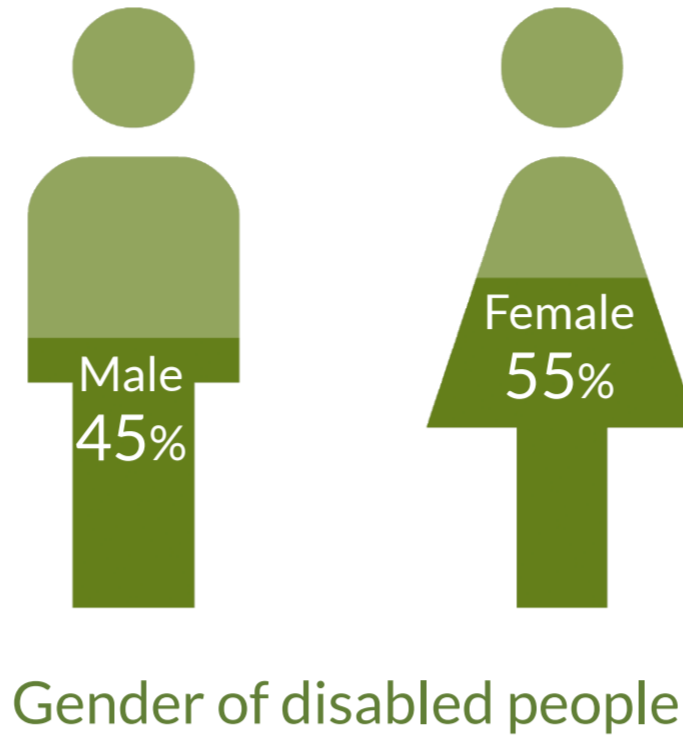
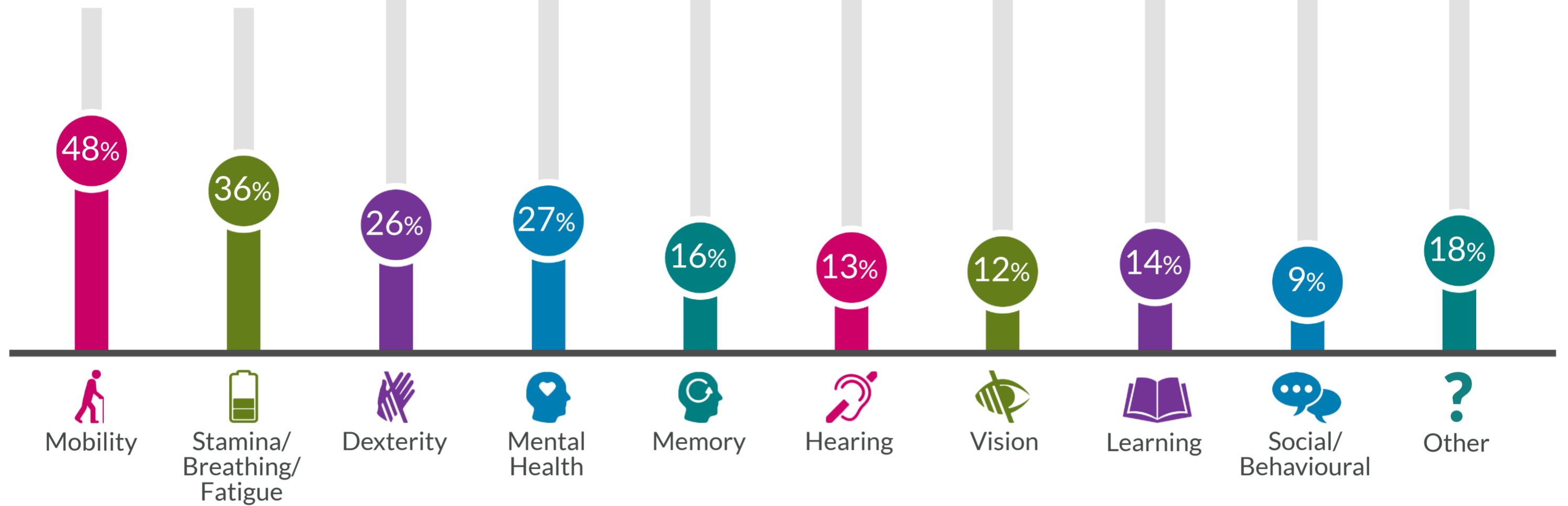


# Understanding disability in the UK



## Impairments experienced by disabled people



## 80% of disabilities are invisible



## Almost 75% of disabled people have multiple impairments



## Less than 6% of disabled people regularly use a wheelchair



## Working age disabled adults are a third less likely to be employed



## Disabled people are over twice as likely to be aged 65 or over



## Compared to 2015, 10% more disabled adults are recent internet users



## Disabled adults are almost four times more likely to report feeling lonely



## Disabled adults are equally as likely to be part of a group or club as non-disabled adults



**Sources:** Office for National Statistics. (2019). Improving disability data in the UK: 2019. Sport England. (2016). Mapping disability | The facts. Department for Work and Pensions. (2020). Family Resources Survey: financial year 2018/19. Sense (2019). Research. Office for National Statistics. (2019). Internet users, UK: 2019. National Diversity Council. (2018). Disability Inclusion in the Workplace: Is your company meeting the standard? NHS. (2014). Improving Wheelchair Services.